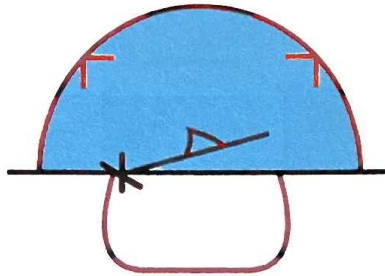


# WORLD PRO GOALTENDING

## Back Door Play



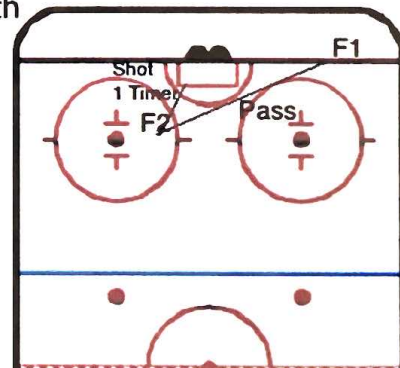
Goalie starts on post on the same side as the shooter.

As pass is made across goalie will butterfly slide to make one-timer save.

## Player Movements and Key Points

F1 starts below goalline on same side as goaltender with F2 on opposite side approximately one stick length from face-off dot. When the goalie is set, F1 makes pass to F2 for a one-timer. Goalie must slide a cross square and tight so that knees are not exposed and no holes are presented to shooter.

If goalie is not square or tight, potential for injury does exist.



## Legend

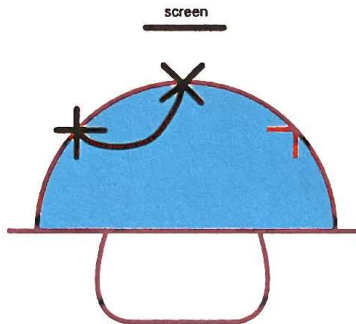
△ - Butterfly

—△— - Butterfly Slide

X - Stance

# WORLD PRO GOALTENDING

## Screen Play



- Goalie starts set at the face-off dot.
- Goalie follows pass to the slot, settling behind the screen.
- F2 takes a shot to the lower part of the net.

## Player Movements and Key Points



F1 is at the face-off dot. F2 in the high slot. Extra goalie is screening. F1 has puck at FOD, passes to F2 in the high slot. F2 holds on to the puck for 2 seconds, then takes a low shot. Goalie has to compete for vision of the puck and maintain enough space to move freely.



## Legend

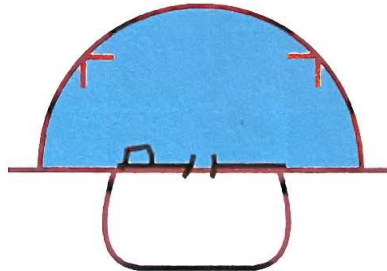
X - Stance

— - T Push



# WORLD PRO GOALTENDING

## Wraparound



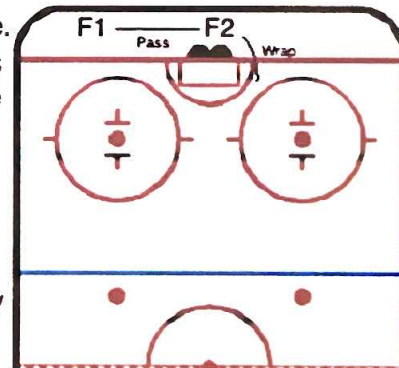
Goalie starts at the post with F1

When pass is made, goalie pushes to middle net to see F2 behind net.

When F2 moves, goalie pushes to post to meet player for play at post.

## Player Movements and Key Points

F1 starts below goalline on the same side as the goalie. F2 begins directly behind middle bar of net. F1 makes pass to F2. When goalie is set to F2, F2 drives for the opposite post and attempts to score with a wrap.



Note: Goalie should attempt to make a save with a jam/collapse at the post. The shooter should not attempt to drive around goalie to score at post near F1.

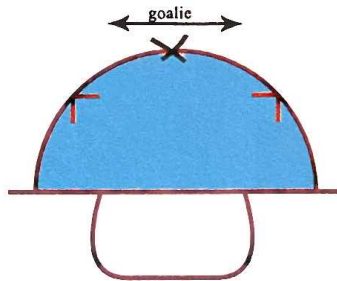
## Legend

→ ← - Push-Turn-Push (shuffle)

□ - Knee Drop/ Post Jam

# WORLD PRO GOALTENDING

## Puck Handles- Straight Dump Ins



- Goalie stands at top of the crease waiting for a straight dump in.
- The goalie has to reach down to cushion and control the puck.
- Once the puck is controlled the goalie has to get back up and pass the puck to his/ her target.

## Technical Skills and Key Points

### Cushioning

- Down or get low
- Protect the puck by using paddle or stick blade
- Ability to cushion the puck by creating an angle with the stick



### Passing

- Ability to position stick and puck close to body in order to make a crisp, flat pass..
- Ability to follow through pass for accuracy.